



APPLICATION NOTE

HOW TO DEBUG VSPHERE WEB SERVICES 6.5 DEMOS IN ECLIPSE

Revision 0.1

Repository location

Modified Date: 11/1/16 3:09:00 PM

Table of Contents

1.	Background information	3
2.	Creating an Eclipse Debug Launch step by step.....	3
2.1	Click on the debug button to open the launch dialog	3
2.2	Create a new Java Application launch	3
2.3	Enter the project, and Main class on the Main tab	4
2.4	Enter the values on the Arguments tab.....	5
2.4.1	Program arguments	5
2.4.2	VM arguments	5
2.4.3	Working Directory	5
2.5	Launching.....	6

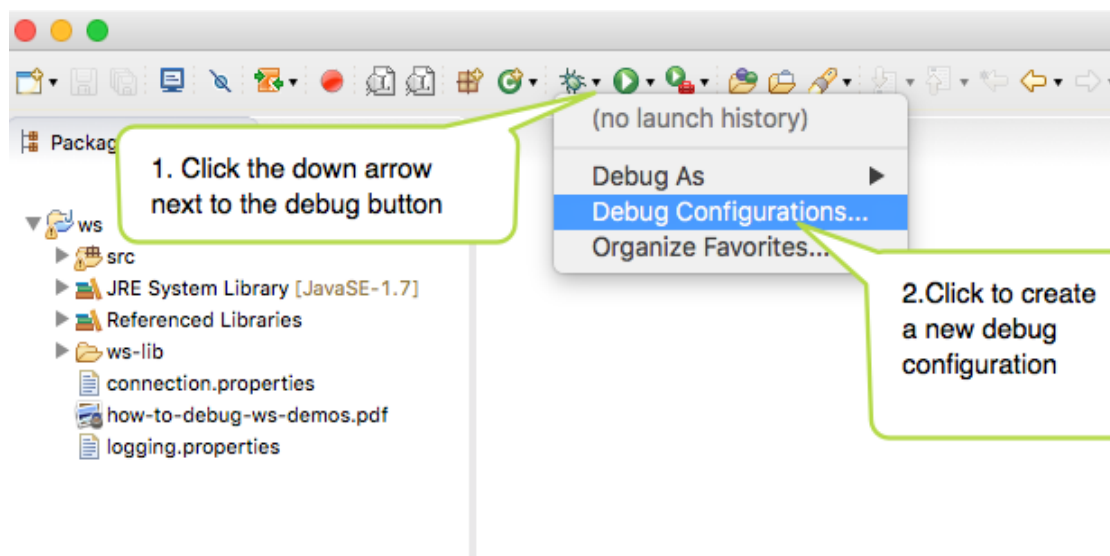
1. Background information

The vSphere Web Services version 6.5 SDK includes dozens of demos. In order to scale to this gracefully and have a common mechanism for launching, the SDK authors created a common launching mechanism via a shell script or batch file which utilizes Java annotations to indicate which demo to launch. In order to launch demos under the Eclipse Java debugger, some configuration of the resulting project is necessary, and this document is a brief guide to that process.

2. Creating an Eclipse Debug Launch step by step

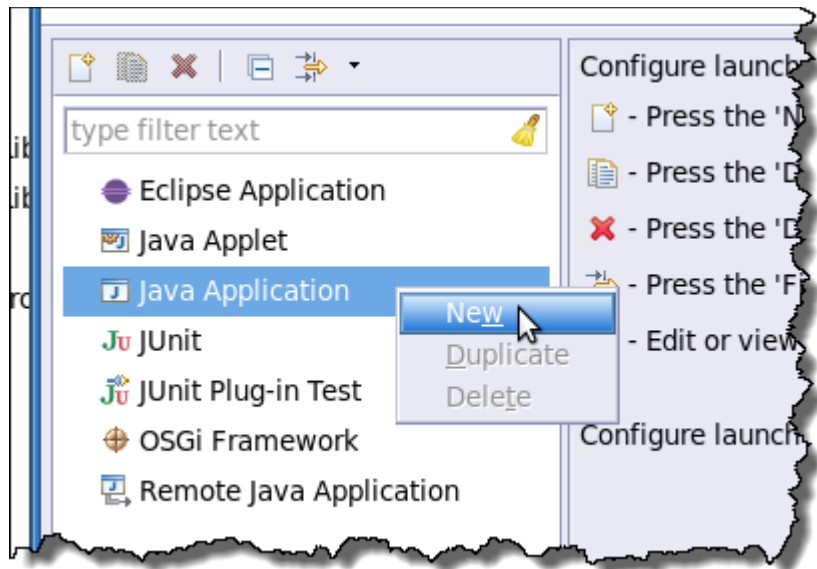
2.1 Click on the debug button to open the launch dialog

If this is the first time you can click the debug button, otherwise you should click the small down arrow next to the debug button, and then select “Debug Configurations...”



2.2 Create a new Java Application launch

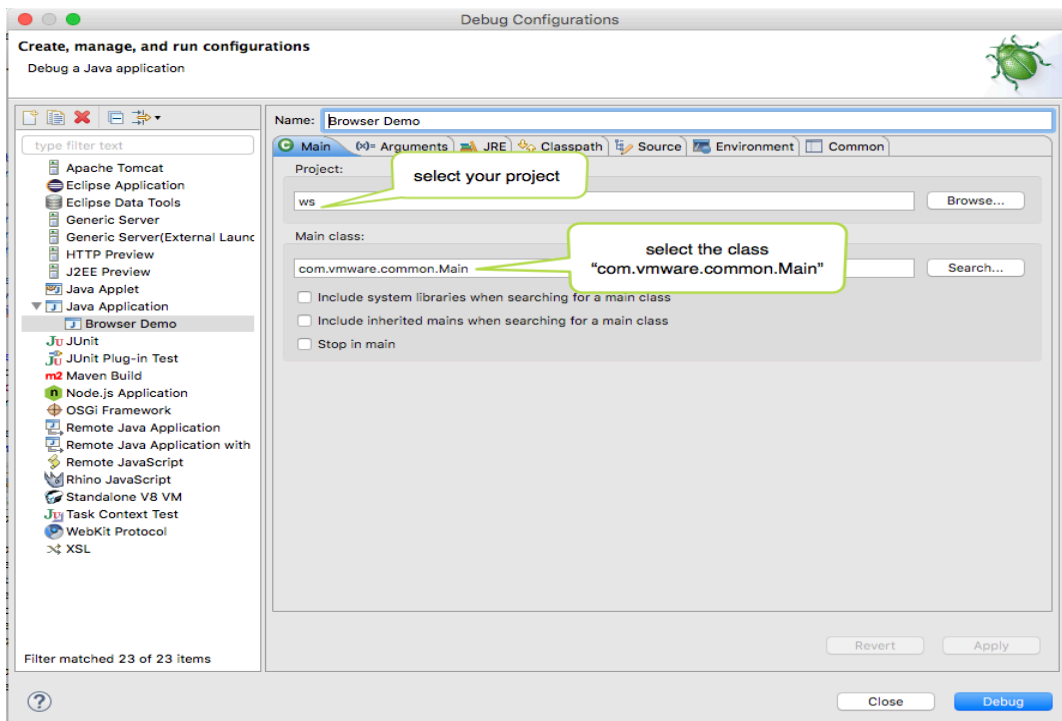
Right click on the “Java Application” item in the list and select “New”



2.3 Enter the project, and Main class on the Main tab

First select the project that you created.

Next, for the “Main class” edit box, enter “**com.vmware.common.Main**”. All demos use this as the launcher class.



2.4 Enter the values on the Arguments tab

2.4.1 Program arguments

You must enter the full Java class name of the demo that you want to launch. In this example, `com.vmware.general.Browser` was used, though any of the other included demos can also be used.

Note that after the class name you must *enter any arguments required by the demo*. Every demo is different in this regard, though most of them require

`--url`

`--username`

`--password`

In the case of this example, I gave a URL to a local vCenter instance alongside user name and password arguments.

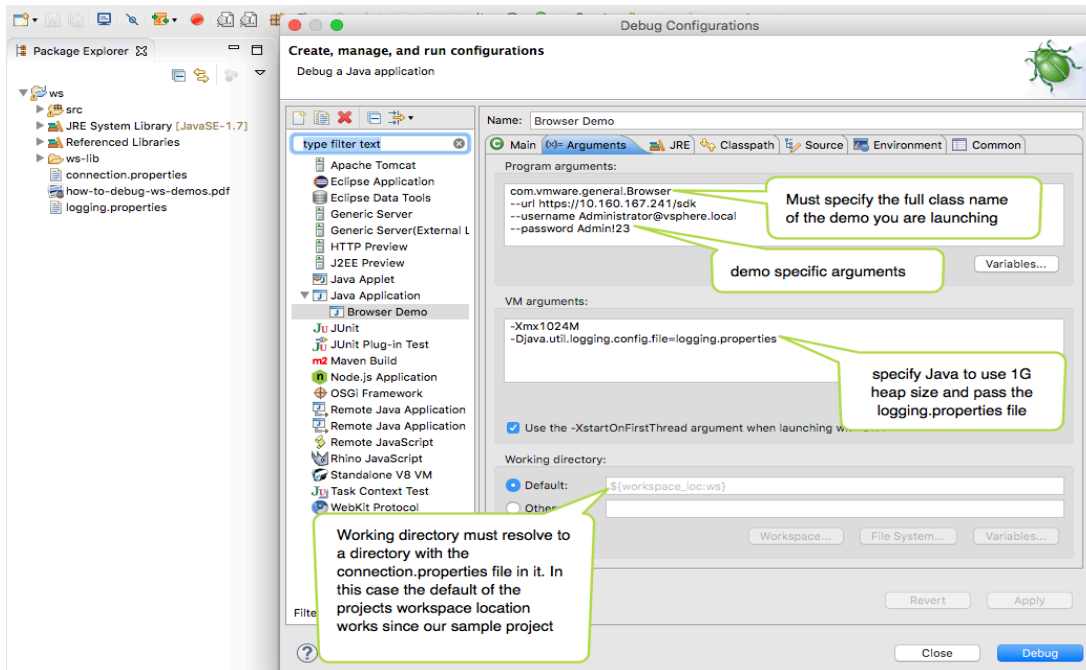
2.4.2 VM arguments

Enter `"-Xmx1024M"` so that the Java virtual machine will use up to 1G for the heap.

Enter `"-Djava.util.logging.config.file=logging.properties"` so that the logging properties file is used.

2.4.3 Working Directory

The Java libraries used for the secure connection require that a `"connection.properties"` file exists in the working directory when the demo starts up. The default argument when we created the launch and selected the project resolves to our projects directory, which happens to contain `connection.properties`, so this works. If you have some other configuration, you may need to specify the path to a directory with this file here.



2.5 Launching

When you are ready, click the “Debug” button to launch. In the Eclipse console you should see output similar to the following:

```

<terminated> Browser Demo [Java Application] /usr/lib/jvm/java-6-openjdk/bin/java (Aug 6, 2013, 3:36:10 PM)
WARNING: Java is now set to trust all SSL certificates.
-- VMware samples in Java --
> VirtualMachine:vm-301{win7_64bit_java7}
> HostSystem:host-93{peng013.eng.vmware.com}
> VirtualMachine:vm-238{vipt-ubuntu_9.04_desktop_64}
> VirtualMachine:vm-299{RHEL61WS_64bit_Java7}
> Network:network-11{VM Network}
> VirtualMachine:vm-200{ESXi55-borisz-1192841-1}
> VirtualMachine:vm-79{sles10spl-lsi-lun6}
> VirtualMachine:vm-239{ESXi55-borisz-1209974-1}
> VirtualMachine:vm-230{vipt-SLES1132}
> Datastore:datastore-21{rhel5-pv-lun4}
> Datastore:datastore-281{datastore1 (6)}
> VirtualMachine:vm-293{vipt_rhel_55_64}
> Folder:group-h4{host}
> VirtualMachine:vm-76{ESXi-41-borisz}
> VirtualMachine:vm-289{my test}
> Datastore:datastore-26{vmfs-spanning}
> VirtualMachine:vm-234{New-VIPT-SLES11-64}
> VirtualMachine:vm-44{ESXi51-borisz-732143-2}
> VirtualMachine:vm-41{ESXi51-borisz-732143-1}
> VirtualMachine:vm-322{VC51}
> VirtualMachine:vm-305{vipt-win2008_64}
> VirtualMachine:vm-304{rhel63server_32bit}
> Datastore:datastore-25{Storage1 (3)}
> HostSystem:host-280{10.20.76.39}
> VirtualMachine:vm-82{rhel5u1-pv-lun4}
> Folder:group-v3{vm}

```